

4.2 11-Pin-Sockets

S3-M0 / S3-M1

11-pin C3 Relay socket | Time & Monitoring Module compatible | screw terminal



General data

Rated load	10 A / 250 V
Dielectric strength	
- All terminals / DIN rail	2.5 kV rms / 1 min
- Terminal / terminal	2.5 kV rms / 1 min
Conductor cross section	
- Single wire	1 x 6 mm ² / AWG 10, 2 x 1.5 mm ² / AWG 16
- Multi wire (un-crimped)	1 x 4 mm ² / AWG 12, 2 x 1.5 mm ² / AWG 16
Nominal screw torque	0.7 Nm
Screw Dimension	M3 Pozi slot
Mounting	TH35 (EN 60715) or back panel mounting
Storage temperature (no ice)	-40 ... 80 °C
Operation temperature	-25 ... 60 °C
Weight	61 g
Housing material	PA / PC

Included Accessories

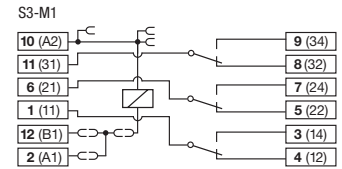
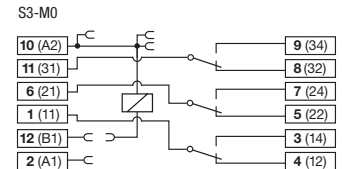
4-pole potential bridge bar	C-A2 (BAG 5PCS)
-----------------------------	-----------------

Optional Accessories

Retaining spring steel	HF-32 (BAG 10 PCS), HF-33 (BAG 10 PCS)
Coding ring	S3-BC (BAG 5 PCS)
Freewheeling diode module for S3-M, S3-M0, S5-M	RD1/DC12-220V
RC-Suppressor module	RC2/UC110-240V, RC1/UC110-240V
4-pole potential bridge bar	C-A2 (BAG 50PCS)

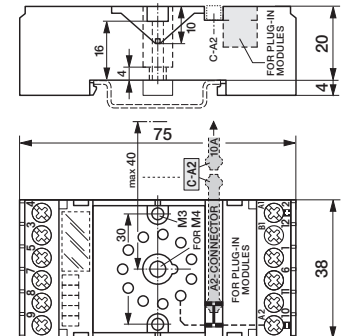


fig. 1. Wiring diagram



Bridge Connector SC-3 included

fig. 2. Dimensions (mm)



Technical approvals, conformities

Standards EN 60664-1

Approvals



Kühn Controls AG

Notes:

You want more information about this product, please call us: tel: +49 (0)7082-940000 or send us a fax: +49 (0)7082-940001, or email: sales@kuehn-controls.de or visit our Website: www.kuehn-controls.de